

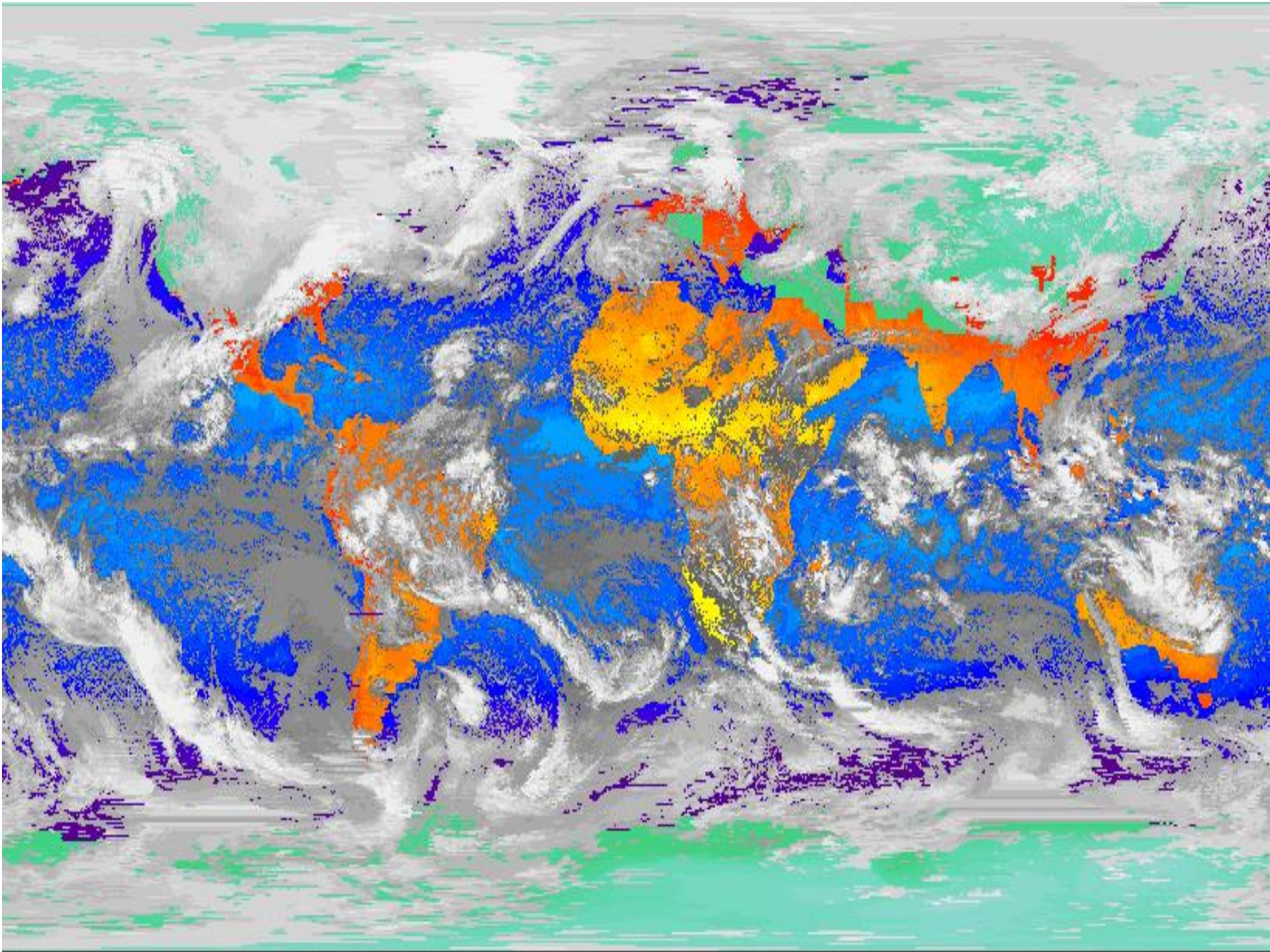
KEY TO CLOUD PROCESS DIAGNOSIS IS TIME-RESOLVED OBSERVATIONS

“ ISCCP Products Contain at 3-hr Intervals:

- . Cloud Properties by Type and Phase (Amount, Top Temperature/Pressure, Optical Thickness, Water Path)
- . Surface Properties (Temperature, Reflectance, Snow-Ice Cover, Topography)
- . Atmospheric Properties (Temperature-Humidity Profiles, Ozone, Aerosol)

“ Additional Products at 3-hr Intervals:

- . Convective System Tracking
- . Weather States
- . Radiative Flux Profiles



ISCCP VERSION H

- “ **STATUS:** Processing started, To be completed by early 2016 covering at least 1982-2015 and beyond
- “ **ATTRIBUTES:** 10-km, 3-hr → 100-km, 3-hr/monthly
- “ **CHANGES:** Refined Radiance Calibration, Cloud Detection and Retrievals of Clouds (especially ice clouds) & Surfaces (aerosols, emissivities) Using Improved Ancillary Products (especially atmospheric temperature-humidity),
- “ **Closer to Climate Quality**
- “ **NEW FEATURE:** Global Level 2 Product for Cloud Dynamics Studies [10-km, 3-hr]

NEW OPPORTUNITY

- “ ISCCP PROCESSING CODE WILL BE PUBLICALLY AVAILABLE (FULLY DOCUMENTED OPERATIONS GUIDE)
- “ NEW CODE CAN PROCESS DATA FROM SAME SATELLITES WITH SAMPLING ≤ 30 -KM, ≤ 3 -HR